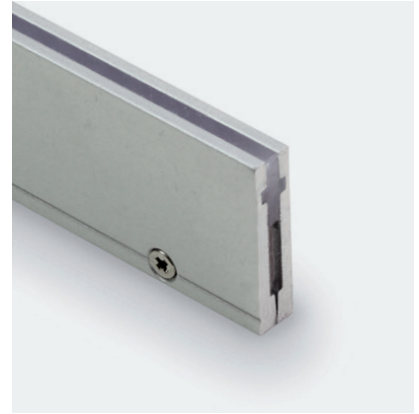


Linear

GROOVE Light Fixture Guide

KKDÖ

Indoor/Outdoor | Recessed | Output up to 24lm/m (7lm/ft)

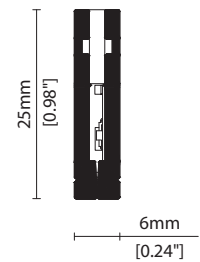


Key applications

- ✓ Architectural detail
- ✓ Cabinet/Furniture
- ✓ Interior/Exterior
- ✓ Orientation lighting

Key features

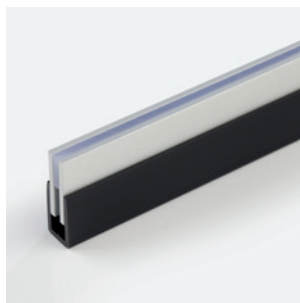
- ✓ Custom lengths
- ✓ Decorative
- ✓ Diffusion: Homogenous
- ✓ Direct view
- ✓ IP40
- ✓ IP65
- ✓ Thin light line



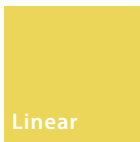
MOUNTING METHODS



KKCP-16 Clip



KKCH-01 PVC channel



GROOVE Light

Specification sheet



Dimensions	H25/W6/L100-1000mm (H0.98/W0.24/L3.94-39.37in)
PCB Cut-point	100mm increment/1000mm max (3.94in increment/39.37in max)
LED Pitch	-
Chip	s-line k-line
Cover/Optics	Diffused (110°)
CCT	s-line: 2300K/2500K/2700K/3000K/3500/4000K k-line: 2300K/2500K/2700K/3000K/3500/4000K
LED binning	s-line: 2-step MacAdam ellipse k-line: 3-step MacAdam ellipse
CRI	≥92
Lifetime	50,000 hours @ 25°C (50,000 hours @ 77°F)
Operating temp	T _a = -25 to 50°C (T _c max = 60°C) T _a = -13 to 122°F (T _c max = 140°F)
IP Rating	IP40/IP65
Finish	Silver anodised
Mounting	Recessed mounting via clips or channel (no flange)
Power feed	Hardwire tails
Control	0-10V/1-10V/DMX/DALI



LED Grading Key

Exclusive Grade

s-line*
2-step CCT range

*KKDC tuned
CCT range

Base Grade

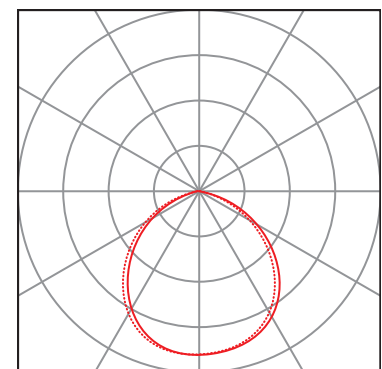
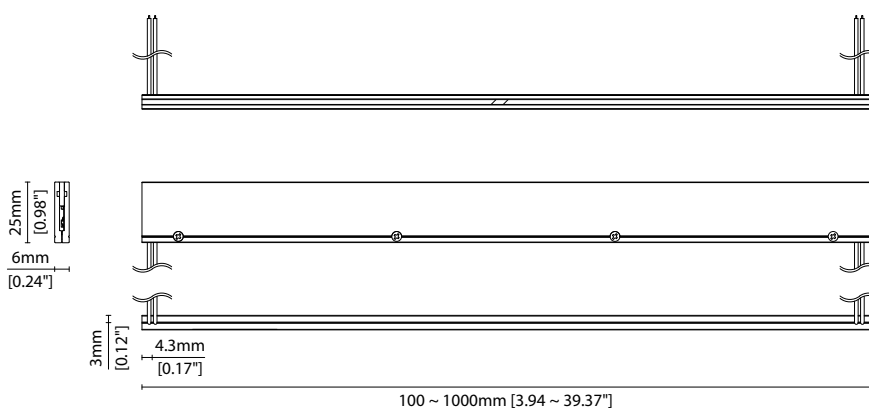
k-line
3-step commercial range
Energy Star CCTs

Power consumption	Supply voltage	Supply current
12 W/m (3.65W/ft)	24V DC	0.5A/m (0.15A/ft)

Performance Data (3000K)

	R1	R2	R3	R4	R5	R6	R7	R8	R9	R10	R11	R12	R13	R14
k-line	92	97	98	92	93	97	89	77	52	91	94	84	94	97

Diffused Cover		CRI	R9	Rf	Rg
s-line	24lm/m (7lm/ft) 2lm/W	92	53	-	-
k-line	23lm/m (7lm/ft) 2lm/W	91	52	-	-



Data derived from independent UKAS / IESNA LM-79-08 accredited testing of production samples.

GROOVE Light Code Table



FIXTURE

Model	Finish		Cover ¹		Grade ²		LED	Colour (CCT)		Length Availability ³		IP		Cable Length		Power Feed ⁴		Input	
	GR	SA	Diffused	C	s	k		2300K	23	m	100-1000mm 100mm increments	IP40	40	300mm (11.81in)	0300	Single no sheath tail Double no sheath tail	S00X D00X	DC 24V	g
GROOVE Light	GR	Silver Anodised	SA	Diffused	C	s	104	2300K	23	m	100-1000mm 100mm increments	IP40	40	300mm (11.81in)	0300	Single no sheath tail Double no sheath tail	S00X D00X	DC 24V	g
								2500K	25										
								2700K	27	i	3.94-39.37in 3.94in increments								
								3000K	30										
								3500K	35										
								4000K	40										

¹ Refer to **Cover/Lens Options** on **Options** pages

² Refer to **LED Grading Key** on **Specification sheet** page

³ Refer to **Length Availability List** or enter total run length instead of length code

⁴ Refer to **Power Feed Options** on **Options** pages

Code Example:

GR	-	SA	-	C	-	s	-	104	-	30	-	m	-	500	-	40	-	0300	-	D00X	-	g
GROOVE Light		Silver Anodised		Diffused		s		104		3000K		m		500mm		IP40		300mm/11.81"		Double no sheath tail		24V DC

ACCESSORIES

Lighting Accessories

KKLA-01A	GROOVE Light-L accessory (2700K)
KKLA-01P	GROOVE Light-L accessory (3000K)
KKLA-02A	GROOVE Light-X accessory (2700K)
KKLA-02P	GROOVE Light-X accessory (3000K)

* Refer to **Lighting Accessories** on **Accessories** pages

Mounting Accessories

KKCP-16	Clip
KKCH-01	PVC Channel

* Refer to **Mounting accessories** on **Accessories** pages

PSU/Driver

0-10V/1-10V/DALI/DMX

* Refer to **Driver/PSU Options** page for details or provide requirement and KKDC to offer the suitable option

LED ENGINE VARIANTS (LED STRIP TYPE)

Luminaire	LED	Lumen/m	Lumen/ft	W/m	W/ft	Spec Doc	Length	Increment
GROOVE Light	104	24	7	12	3.65	GROOVE Light	100-1000mm (3.94-39.37in)	100mm (3.94in)
GROOVE Light IP67	104	51	16	12	3.65	GROOVE Light IP67	100-1000mm (3.94-39.37in)	100mm (3.94in)
GROOVE Light RGB	101	Red 2 Green 10 Blue 3 RGB 15	Red 0.6 Green 3 Blue 1 RGB 5	21.6	6.58	GROOVE Light RGB	100-1000mm (3.94-39.37in)	100mm (3.94in)

* Performance data: s-line, diffused cover, 3000K

Linear

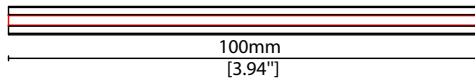
GROOVE Light Length Availability List



Length Code		Fixture Length ¹		LED Strip ²		End Cap Dimension		Wattage (W)	Output (lm)
Metric	Imperial(US)	Metric	Imperial(US)	Metric	Imperial(US)	Metric	Imperial(US)		3000K (Test Data)
m0100	i0004	100mm	3.94in	100mm	3.94in	N/A	N/A	1.20	2
m0200	i0008	200mm	7.87in	200mm	7.87in	N/A	N/A	2.40	5
m0300	i0012	300mm	11.81in	300mm	11.81in	N/A	N/A	3.60	7
m0400	i0016	400mm	15.75in	400mm	15.75in	N/A	N/A	4.80	10
m0500	i0020	500mm	19.69in	500mm	19.69in	N/A	N/A	6.00	12
m0600	i0024	600mm	23.62in	600mm	23.62in	N/A	N/A	7.20	14
m0700	i0028	700mm	27.56in	700mm	27.56in	N/A	N/A	8.40	17
m0800	i0031	800mm	31.50in	800mm	31.50in	N/A	N/A	9.60	19
m0900	i0035	900mm	35.43in	900mm	35.43in	N/A	N/A	10.80	22
m1000	i0039	1000mm	39.37in	1000mm	39.37in	N/A	N/A	12.00	24

¹ Actual total overall length of light fixture (LED strip + end caps + void/wire hole)

² Actual length of PCB strip



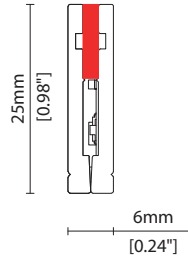


GROOVE Light Options



COVER/LENS OPTIONS

* Options are an integral part of the fixture ordering codes. Please refer to **Code Table** pages.



C Diffused cover

W6/H25mm (W0.24/H0.98")

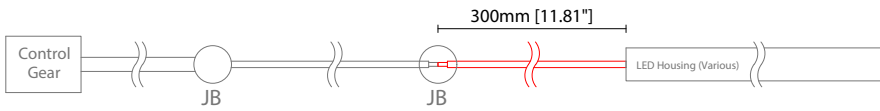


GROOVE Light Options

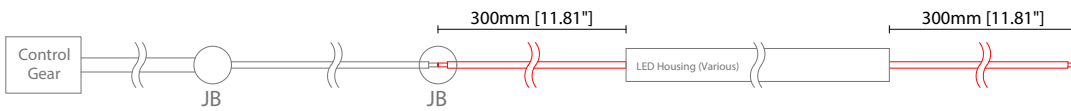


POWER FEED OPTIONS

0300 S00X 300mm (11.81") Single no sheath tail



0300 D00X 300mm (11.81") Double no sheath tail

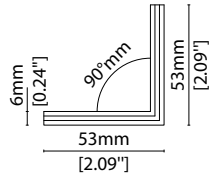


Key

Control Gear Power supply, sub-controllers & control systems
JB Junction box / cable connection

LIGHTING ACCESSORIES

Note: Accessories are to be ordered separately with corresponding code shown below.



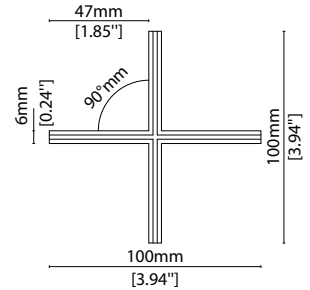
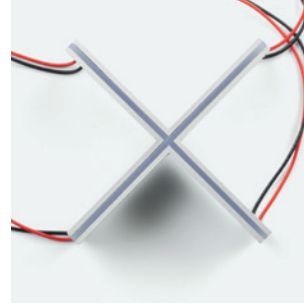
**GROOVE Light-L accessory,
2 x 300mm (11.81in) single tails, IP40 only**

KKLA-01A (2700K HCRI)

KKLA-01P (3000K HCRI)

1.2W

W53/H53mm (W2.09/H2.09")



**GROOVE Light-X accessory,
4 x 300mm (11.81in) single tails, IP40 only**

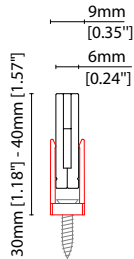
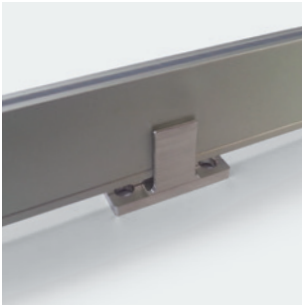
KKLA-02A (2700K HCRI)

KKLA-02P (3000K HCRI)

2.4W

W100/H100mm (W3.94/H3.94")

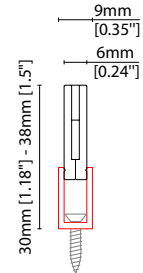
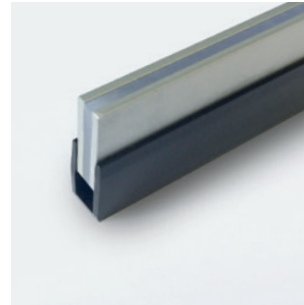
MOUNTING ACCESSORIES



KKCP-16 (1no.)

Clip (allow 2 per metre/40in)
Anodised aluminium finish

W9/H30-40mm (W0.35/H1.18-1.57")



KKCH-01 *

PVC channel (minimum 200mm (7.87in) PVC channel per
500mm (19.69in) of GROOVE Light)
Black PVC finish

W9/H30-38mm (W0.35/H1.18-1.5")

* Specify length of channel in 1000mm (39.37in) increments
(to be cut on site further as required)

KKDC CONTROL



IP20
Plastic housing
L170/W59/H29mm
(L6.69/W2.32/H1.14in)

KKDM-06 1-10V

visDIM dimmable sub-controller
(4 x 8A max @ 12-36V)



IP20
Plastic housing
L170/W53.4/H28mm
(L6.69/W2.10/H1.10in)

KKSC-05 DMX

visDIM dimmable sub-controller
(4 x 5A max @ 12-36V)



IP20
Plastic housing
L170/W59/H29mm
(L6.69/W2.32/H1.14in)

KKDL-02 DALI

visDIM dimmable sub-controller
(4 x 8A max @ 12-36V)



IP20
Plastic housing
L166/W53.4/H23mm
(L6.54/W2.10/H0.91in)

KKDL-03 DALI

visDIM dimmable sub-controller
(4 x 5A max @ 12-36V)

AVAILABLE PSU OPTIONS

Control Mode	PSU (Order Code)	Input Voltage AC	Output Voltage DC	Rated Output Current	Rated Power	Dim %	IP Rating
Switched	CEN-60-24	90-295V	24V	2.5A	60W	-	IP67
	HLG-60H-24	90-305V	24V	2.5A	60W	-	IP67
	HLG-100H-24	90-305V	24V	4.0A	100W	-	IP67
	HLG-150H-24	90-305V	24V	6.3A	150W	-	IP67
	HLG-240H-24	90-305V	24V	10A	240W	-	IP67
0-10V (1-10V)	PWM-40-24	90-305V	24V	1.67A	40W	100-0.15 (100-10)	IP67
	PWM-60-24	90-305V	24V	2.5A	60W	100-0.15 (100-10)	IP67
	PWM-90-24	90-305V	24V	3.67A	90W	100-0.15 (100-10)	IP67
	PWM-120-24	90-305V	24V	5.0A	120W	100-0.15 (100-10)	IP67
DALI	LIN100A1	120-277V	24V	1A per channel	100W	100-0.1	IP66/IP40
DMX RGB	LIN100A1	120-277V	24V	1.33A per channel	100W	100-0.1	IP66/IP40
DMX RGBW	LIN100A1	120-277A	24V	1A per channel	100W	100-0.1	IP66/IP40

Flicker Free Options - Combination of PSU+ sub-controller

Control Mode	PSU (Order Code)	Sub-controller (Order Code)	Input Voltage AC	Output Voltage DC	Rated Output Current	Rated Power	Dim %	IP Rating PSU/ Sub-controller
0-10V or 1-10V	CEN-60-24	KKDM-06	90-295V	24V	2.5A	60W	100-0.9	IP67/IP20
	HLG-60H-24	KKDM-06	90-295V	24V	2.5A	60W	100-0.9	IP67/IP20
	HLG-100H-24	KKDM-06	90-295V	24V	4.0A	100W	100-0.9	IP67/IP20
	HLG-150H-24	KKDM-06	90-295V	24V	6.3A	150W	100-0.9	IP67/IP20
	HLG-240H-24	KKDM-06	90-295V	24V	10.0A	240W	100-0.9	IP67/IP20
DALI	CEN-60-24	KKDL-02/03	90-295V	24V	2.5A	60W	100-0.1	IP67/IP20
	HLG-60H-24	KKDL-02/03	90-305V	24V	2.5A	60W	100-0.1	IP67/IP20
	HLG-100H-24	KKDL-02/03	90-305V	24V	4.0A	100W	100-0.1	IP67/IP20
	HLG-150H-24	KKDL-02/03	90-305V	24V	6.3A	150W	100-0.1	IP67/IP20
	HLG-240H-24	KKDL-02/03	90-305V	24V	10.0A	240W	100-0.1	IP67/IP20
DMX RGB	CEN-60-24	KKSC-05	90-295V	24V	2.5A	60W	100-0.9	IP67/IP20
	HLG-60H-24	KKSC-05	90-305V	24V	2.5A	60W	100-0.9	IP67/IP20
	HLG-100H-24	KKSC-05	90-305V	24V	4A	100W	100-0.9	IP67/IP20
	HLG-150H-24	KKSC-05	90-305V	24V	6.3A	150W	100-0.9	IP67/IP20
	HLG-240H-24	KKSC-05	90-305V	24V	10.0A	240W	100-0.9	IP67/IP20

¹ The items shown above cover the most frequently used specification but does not exhaust the possible options

² PSU and/or driver can be chosen from the table, or KKDC may recommend the best option upon receipt of the controls requirement and installation environment

³ Electrical shop drawing will include detailed information of PSU and relevant control drivers

⁴ Cut sheets are available on the controls section of www.kkdc.lighting or upon request